

Advantage - Scales

Trumpet/Baritone T.C.

Major Scales (One Octave)

arranged by Sandy Feldstein & Larry Clark

G-Major Scale (F Concert)

Musical notation for the G-Major Scale (F Concert) in 4/4 time. The scale is written on a single staff with a treble clef and a key signature of one sharp (F#). The notes are: F4 (quarter), F#4 (quarter), G4 (quarter), A4 (quarter), B4 (quarter), C5 (quarter), B4 (quarter), A4 (quarter), G4 (quarter), F#4 (quarter), F4 (quarter), E4 (quarter), D4 (quarter), C4 (half). The first six notes are grouped with a slur, and the last six notes are also grouped with a slur.

C-Major Scale (Bb Concert)

Musical notation for the C-Major Scale (Bb Concert) in 4/4 time. The scale is written on a single staff with a treble clef and a key signature of two flats (Bb). The notes are: C4 (quarter), D4 (quarter), E4 (quarter), F4 (quarter), G4 (quarter), A4 (quarter), B4 (quarter), A4 (quarter), G4 (quarter), F4 (quarter), E4 (quarter), D4 (quarter), C4 (half). The first six notes are grouped with a slur, and the last six notes are also grouped with a slur.

F-Major Scale (Eb Concert)

Musical notation for the F-Major Scale (Eb Concert) in 4/4 time. The scale is written on a single staff with a treble clef and a key signature of one flat (Eb). The notes are: F4 (quarter), G4 (quarter), A4 (quarter), Bb4 (quarter), C5 (quarter), Bb4 (quarter), A4 (quarter), G4 (quarter), F4 (quarter), Eb4 (quarter), F4 (quarter), Eb4 (quarter), D4 (quarter), C4 (half). The first six notes are grouped with a slur, and the last six notes are also grouped with a slur.

Bb-Major Scale (Ab Concert)

Musical notation for the Bb-Major Scale (Ab Concert) in 4/4 time. The scale is written on a single staff with a treble clef and a key signature of two flats (Bb). The notes are: Bb4 (quarter), C5 (quarter), D5 (quarter), Eb5 (quarter), F5 (quarter), G5 (quarter), Ab5 (quarter), G5 (quarter), F5 (quarter), Eb5 (quarter), Bb4 (quarter), Ab4 (quarter), G4 (quarter), F4 (half). The first six notes are grouped with a slur, and the last six notes are also grouped with a slur.

Eb-Major Scale (Db Concert)

Musical notation for the Eb-Major Scale (Db Concert) in 4/4 time. The scale is written on a single staff with a treble clef and a key signature of three flats (Eb). The notes are: Eb4 (quarter), F4 (quarter), G4 (quarter), Ab4 (quarter), Bb4 (quarter), C5 (quarter), Bb4 (quarter), Ab4 (quarter), G4 (quarter), F4 (quarter), Eb4 (quarter), Db4 (quarter), C4 (half). The first six notes are grouped with a slur, and the last six notes are also grouped with a slur.

Ab-Major Scale (Gb Concert)

Musical notation for the Ab-Major Scale (Gb Concert) in 4/4 time. The scale is written on a single staff with a treble clef and a key signature of three flats (Ab). The notes are: Ab4 (quarter), Bb4 (quarter), C5 (quarter), Db5 (quarter), Eb5 (quarter), F5 (quarter), Eb5 (quarter), Db5 (quarter), C5 (quarter), Bb4 (quarter), Ab4 (quarter), Gb4 (quarter), F4 (half). The first six notes are grouped with a slur, and the last six notes are also grouped with a slur.

Db-Major Scale (Cb Concert)

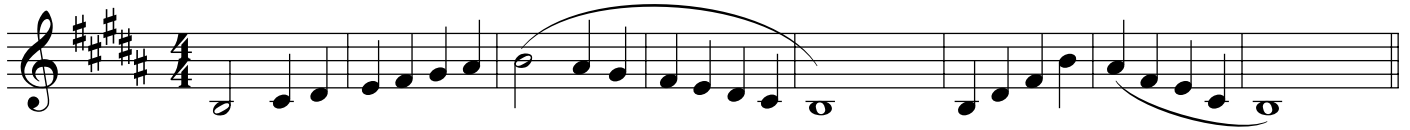
Musical notation for the Db-Major Scale (Cb Concert) in 4/4 time. The scale is written on a single staff with a treble clef and a key signature of four flats (Db). The notes are: Db4 (quarter), Eb4 (quarter), F4 (quarter), Gb4 (quarter), Ab4 (quarter), Bb4 (quarter), Ab4 (quarter), Gb4 (quarter), F4 (quarter), Eb4 (quarter), Db4 (quarter), Cb4 (quarter), Bb3 (half). The first six notes are grouped with a slur, and the last six notes are also grouped with a slur.

Trumpet/Bari TC Scales - 2

F#-Major Scale (E Concert)



B-Major Scale (A Concert)



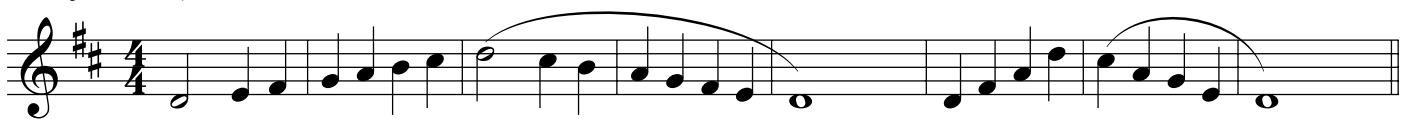
E-Major Scale (D Concert)



A-Major Scale (G Concert)



D-Major Scale (C Concert)



Chromatic Scale

