

Advantage - Scales

Alto & Baritone Sax

Minor Scales

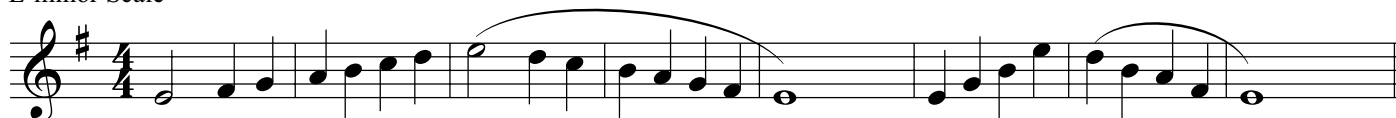
(Natural - One Octave)

arranged by Sandy Feldstein & Larry Clark

B-minor Scale



E-minor Scale



A-minor Scale



D-minor Scale



G-minor Scale



C-minor Scale

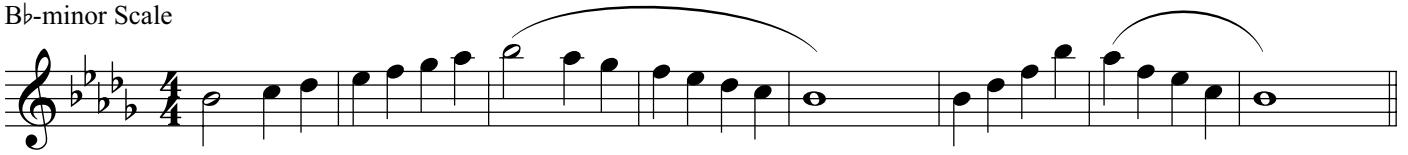


F-minor Scale



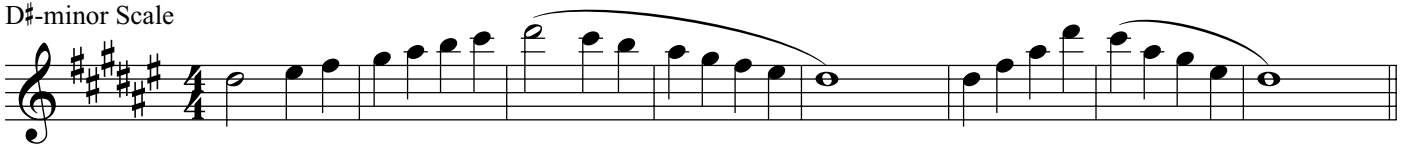
Alto/Bari Sax Minor Scales - 2

B \flat -minor Scale



Musical notation for the B \flat -minor scale in 4/4 time. The scale is written on a single staff in treble clef with a key signature of three flats (B \flat , E \flat , A \flat). The notation shows the ascending and descending scales with slurs and a fermata over the final note.

D \sharp -minor Scale



Musical notation for the D \sharp -minor scale in 4/4 time. The scale is written on a single staff in treble clef with a key signature of four sharps (F \sharp , C \sharp , G \sharp , D \sharp). The notation shows the ascending and descending scales with slurs and a fermata over the final note.

G \sharp -minor Scale




Musical notation for the G \sharp -minor scale in 4/4 time. The scale is written on a single staff in treble clef with a key signature of four sharps (F \sharp , C \sharp , G \sharp , D \sharp). The notation shows the ascending and descending scales with slurs and a fermata over the final note.

C \sharp -minor Scale



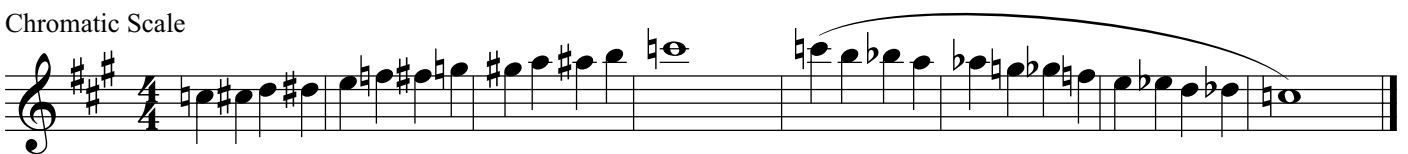
Musical notation for the C \sharp -minor scale in 4/4 time. The scale is written on a single staff in treble clef with a key signature of four sharps (F \sharp , C \sharp , G \sharp , D \sharp). The notation shows the ascending and descending scales with slurs and a fermata over the final note.

F \sharp -minor Scale



Musical notation for the F \sharp -minor scale in 4/4 time. The scale is written on a single staff in treble clef with a key signature of three sharps (F \sharp , C \sharp , G \sharp). The notation shows the ascending and descending scales with slurs and a fermata over the final note.

Chromatic Scale



Musical notation for the chromatic scale in 4/4 time. The scale is written on a single staff in treble clef with a key signature of three sharps (F \sharp , C \sharp , G \sharp). The notation shows the ascending and descending chromatic scales with slurs and a fermata over the final note.