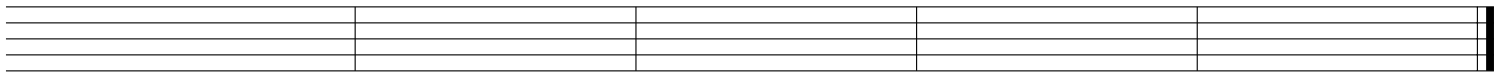
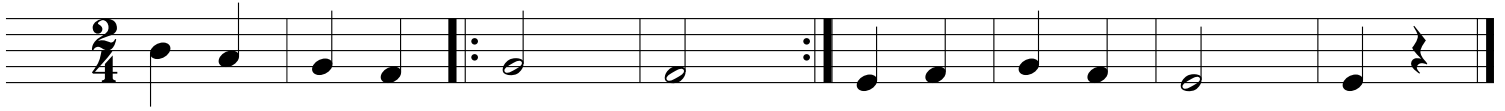


**Advantage** - Theory (After p. 9)

Name: \_\_\_\_\_

Draw the clef of your instrument.

On the blank lines write this song as it would be played without a repeat.



Enter the number of the word that correctly completes the sentence.


- |            |              |             |
|------------|--------------|-------------|
| 1. measure | 5. signature | 9. staff    |
| 2. silence | 6. whole     | 10. quarter |
| 3. bar     | 7. rest      | 11. clef    |
| 4. duet    | 8. double    | 12. half    |

After the clef sign there is a Time \_\_\_\_\_.

The top number of the Time Signature shows the number of beats in each \_\_\_\_\_.

The \_\_\_\_\_ contains five lines.

At the beginning of each staff there is a Treble or Bass \_\_\_\_\_.

The symbol  indicates a whole measure \_\_\_\_\_.

The end of a piece is shown by a \_\_\_\_\_ bar line.

In  $\frac{4}{4}$  time a \_\_\_\_\_ note receives one count.

\_\_\_\_\_ lines separate measures.

In  $\frac{2}{4}$  time a \_\_\_\_\_ note receives two counts.

When two parts are played together, it is called a \_\_\_\_\_.

A quarter rest indicates one count of \_\_\_\_\_.

In  $\frac{4}{4}$  time a \_\_\_\_\_ note receives four counts.